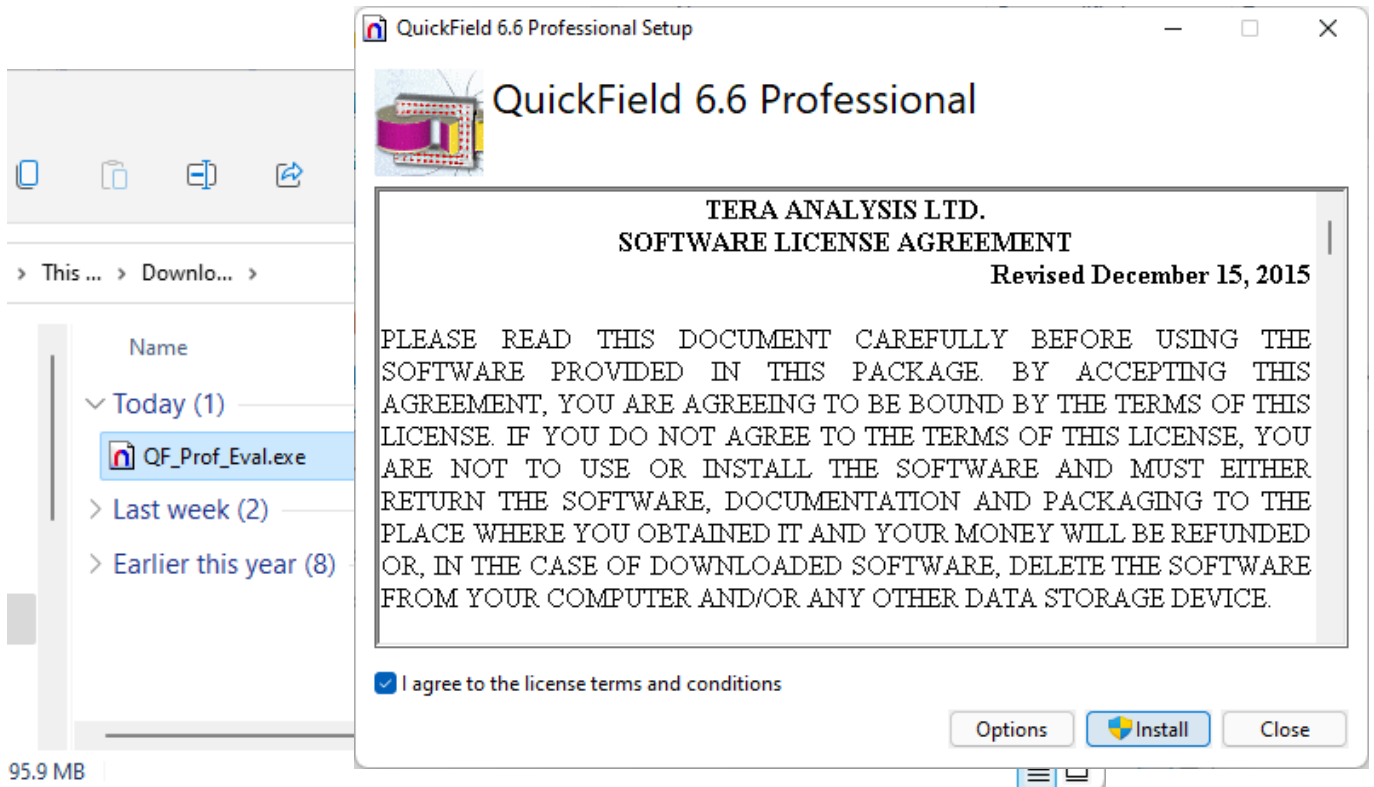


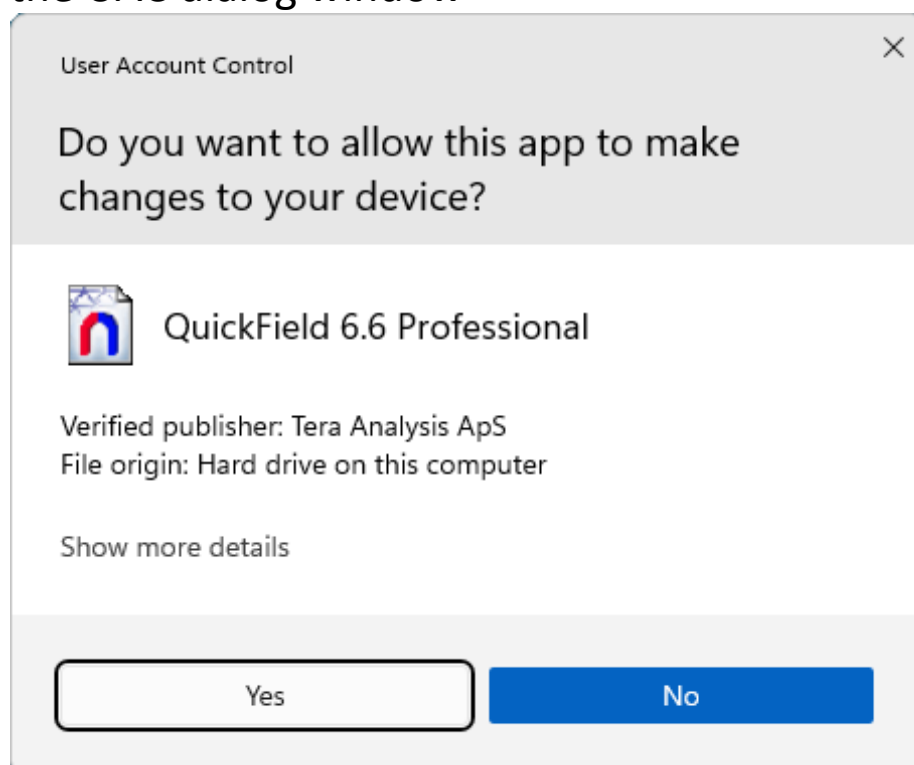
# Instructions for QuickField Internet evaluation

Internet evaluation of QuickField Professional means that the local session of QuickField run on your computer should obtain a temporal license from the license server installed on QuickField Support Team computers.

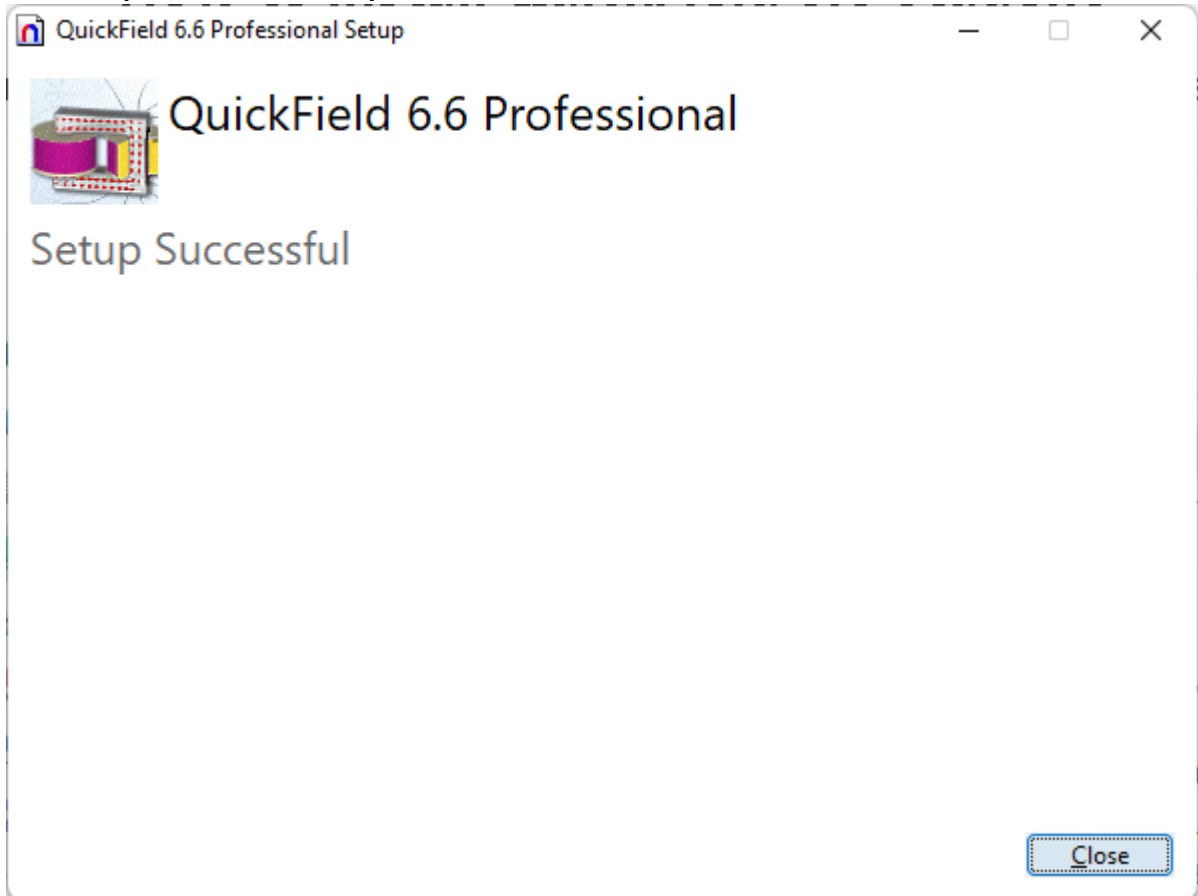
Download and run *QF\_Prof\_Eval.exe*. Agree to the license terms and click **Install** button.



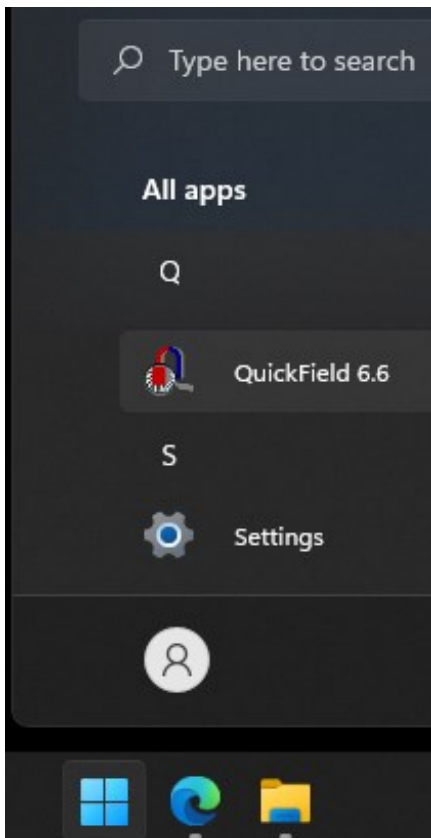
Click Yes in the UAC dialog window



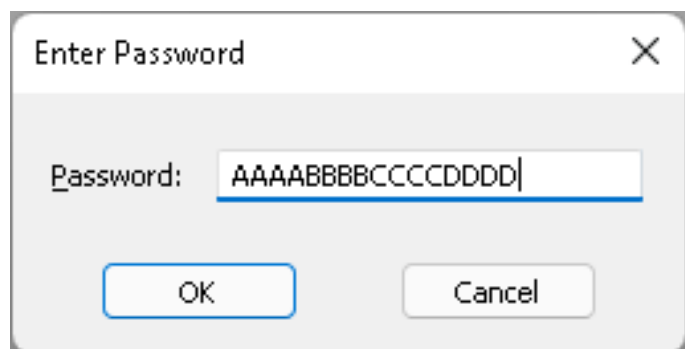
Once Setup is finished you can run QuickField.



You can find QuickField 6.6 in the Start menu in the All applications list.

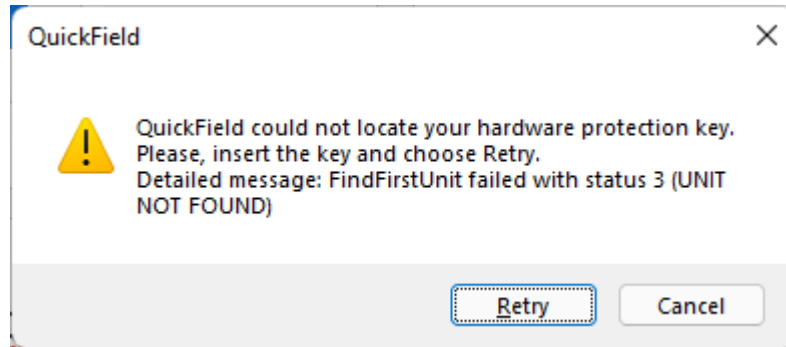


At first run QuickField will ask you to enter a password – 16 letters.

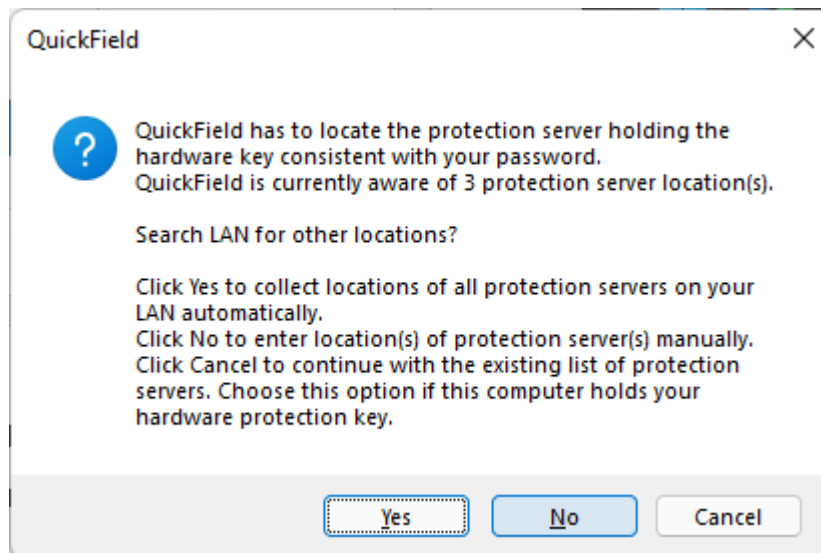


**QuickField should start now.** After the password is expired, QuickField will stop working and the fresh password will be requested. If needed – request a new password from your QuickField representative.

Sometimes QuickField fails to start, and the error message appears.



Click **Retry** and then click **No**.

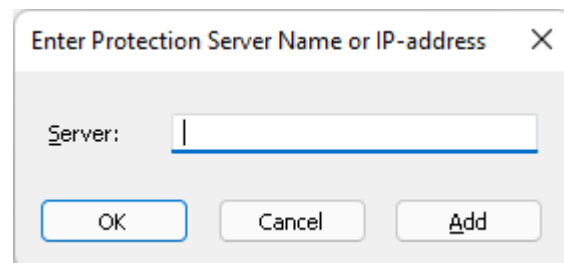


Then type in any of the license server name and click **OK**.

*quickfield1.dyndns.org*

*quickfield2.dyndns.org*

*quickfield3.dyndns.org*



**QuickField should start now.**

For running QuickField Evaluation your computer should be connected to the Internet. QuickField requires TCP,UDP 6001 and 6002 ports to communicate with the license server.

You can check connection by following this link <http://quickfield1.dyndns.org:6002>

The Sentinel License Server webpage should appear. All you have to do then is to allow QuickField to access Internet, same way as your web-browser do.

If you can't see the page or you still have troubles running QuickField you may need to adjust the firewall settings.